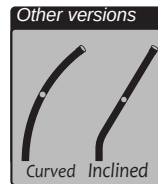


## Z-shaped support (under coping cover) : GCE-RE

The **SECURLISSE<sup>®</sup> evo GCE-RE** is a collective system against falls from heights, designed for roofs that are inaccessible to the public for installation under a coping cover. The base is fixed on the upper face of the parapet, under the coping cover.

**Quick installation**  
**No maintenance**  
**Attractive design**  
**Preserves the waterproofing**



Materials: Aluminium

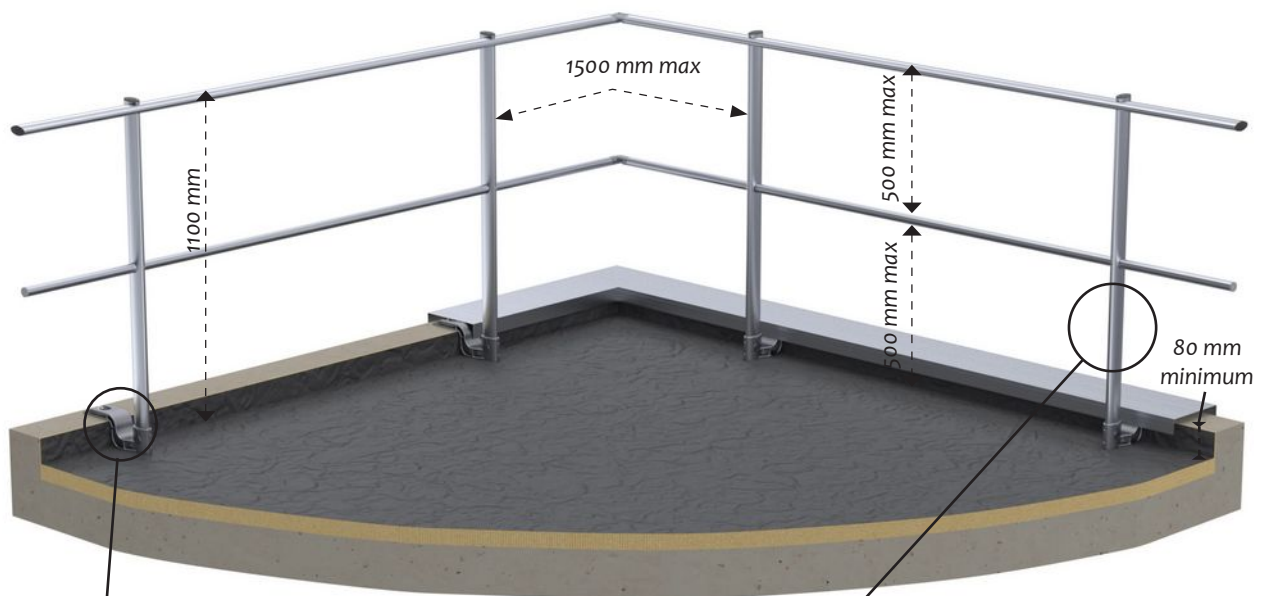
Finish: Raw, anodised or powder coated

Technique: Delivered with manuals and drawings available online at: <http://extranet.somain.fr>

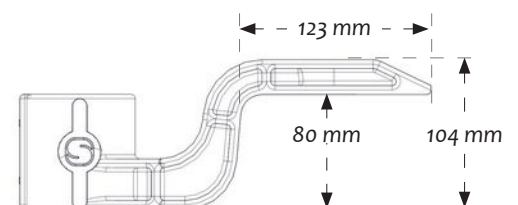
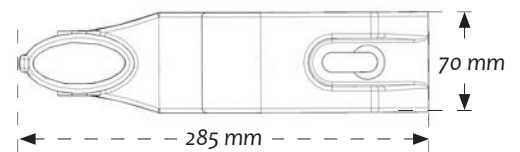


## Straight guardrail with midrail : GCE-RE2

The **SECURLISSE<sup>®</sup> evo GCE-RE2** is used for mounting on a 100 to 570 mm high parapet with a coping cover.



### Space requirement:

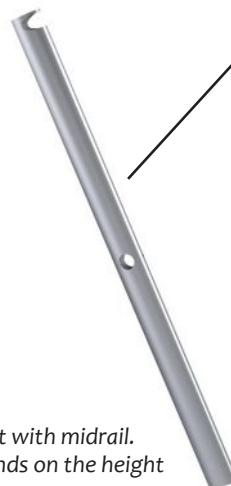


Additional location information: see technical drawing.



**REF: 100255**

Base for fixation under cover coping.  
Fixing : 1 M12



**REF: 102331**

Straight upright with midrail.  
Its length depends on the height of the parapet.

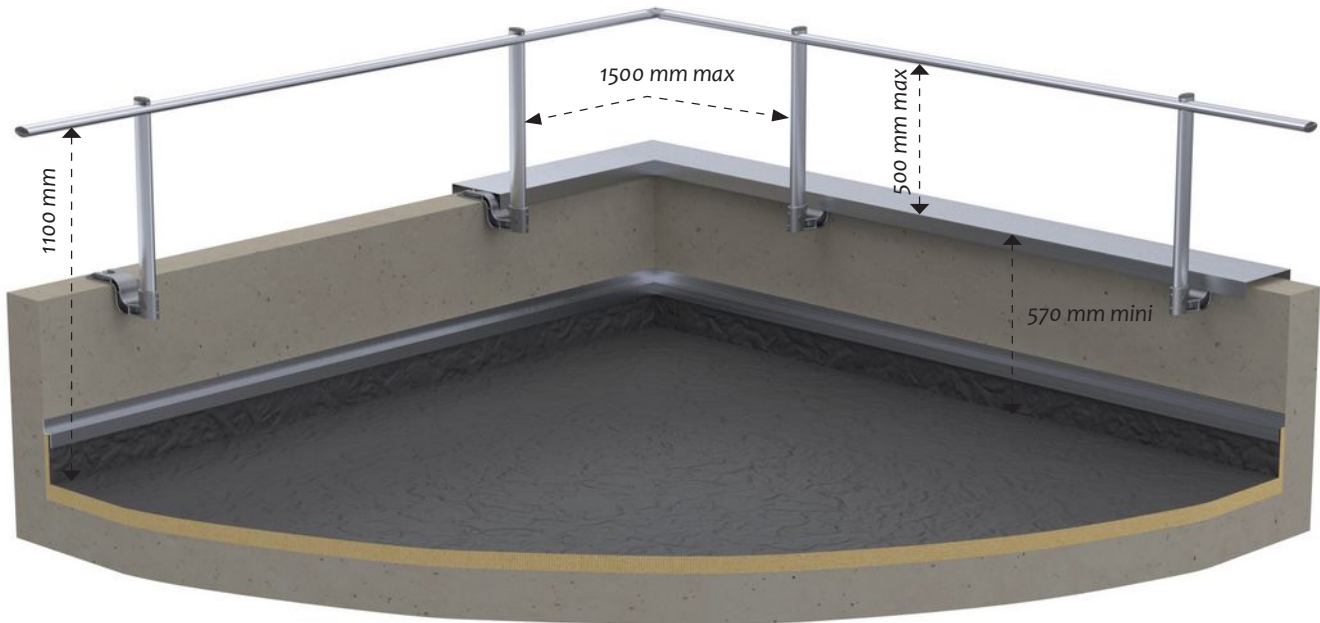
**REF: 102329**

Straight upright without midrail.  
Its length depends on the height of the parapet (higher than 570mm).

STANDARD

## Straight guardrail without midrail: GCE-RE1

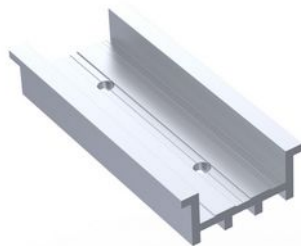
The **SECURILISSE** \* **evo GCE-RE1** is used for mounting on a higher than 570 mm parapet with coping cover.



## Offset version of z-shaped guardrail : GCE-RE1 D & GCE-RE2 D

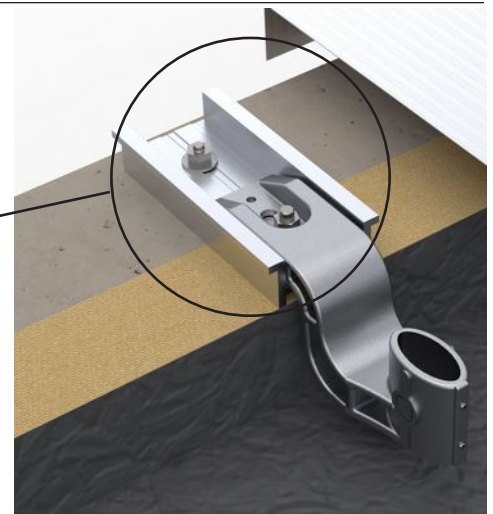
The **SECURILISSE** \* **evo GCE-RE1 D** and **GCE-RE2 D** are suitable for parapets equipped with an insulation and a coping cover.

The GCE-RE baseplate is bolted to the offset plate. The latter is fixed on the upper face of the parapet, under the coping cover.



**REF: SPECIAL**

Aluminium offset plate.  
Tailor-made part as its length depends on the thickness of the insulation.



## Customised for fixing on metal structures:

The **SECURILISSE** \* **evo GCE-RE1** and the **GCE-RE2** can be easily adapted to metal tubes.

The GCE-RE base is fixed to the metal by 4 self-tapping 6.3X38 screws through a special washer.

**REF KIT: 101847**

**REF: 101872**

Adapter washer for metal bracket.

**REF: 101116**

Self-tapping screw by unit.

